



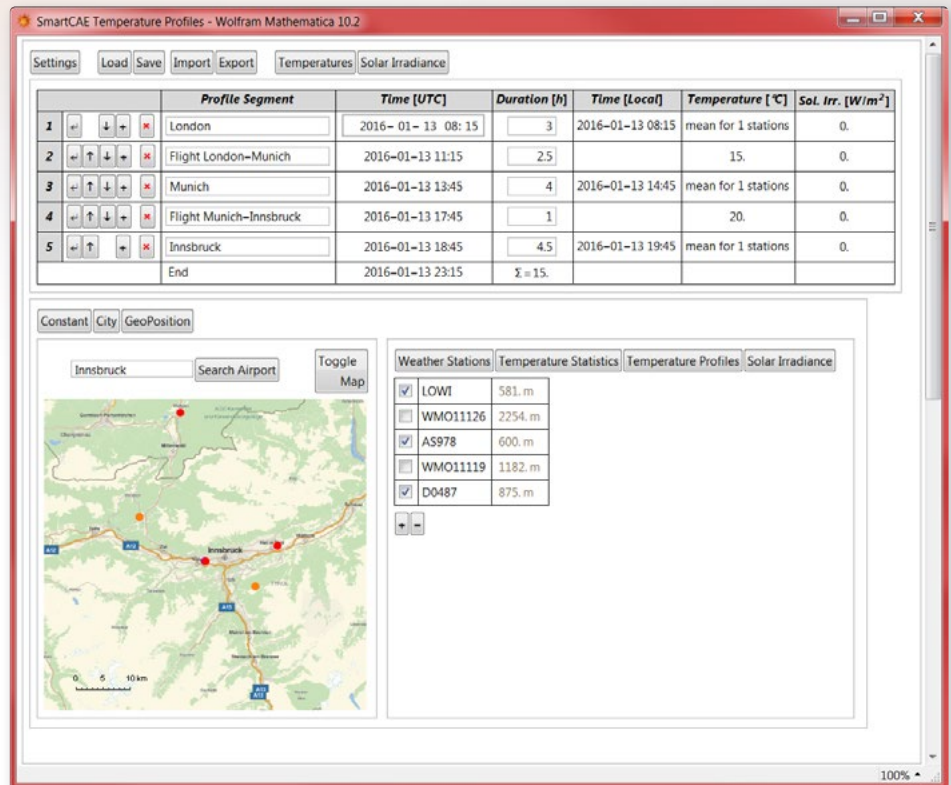
# Temperature *Profiles*

Generate local temperature profiles  
from a global network of weather stations

- Generate temperature profiles based on actual historical weather data
- Weather data from > 20.000 stations worldwide
- Search for nearby weather stations by city, airport, or GPS location
- Obtain complete course of day temperature profiles for recent years
- Statistical evaluation of historical temperature data
- Models for solar & infrared radiation

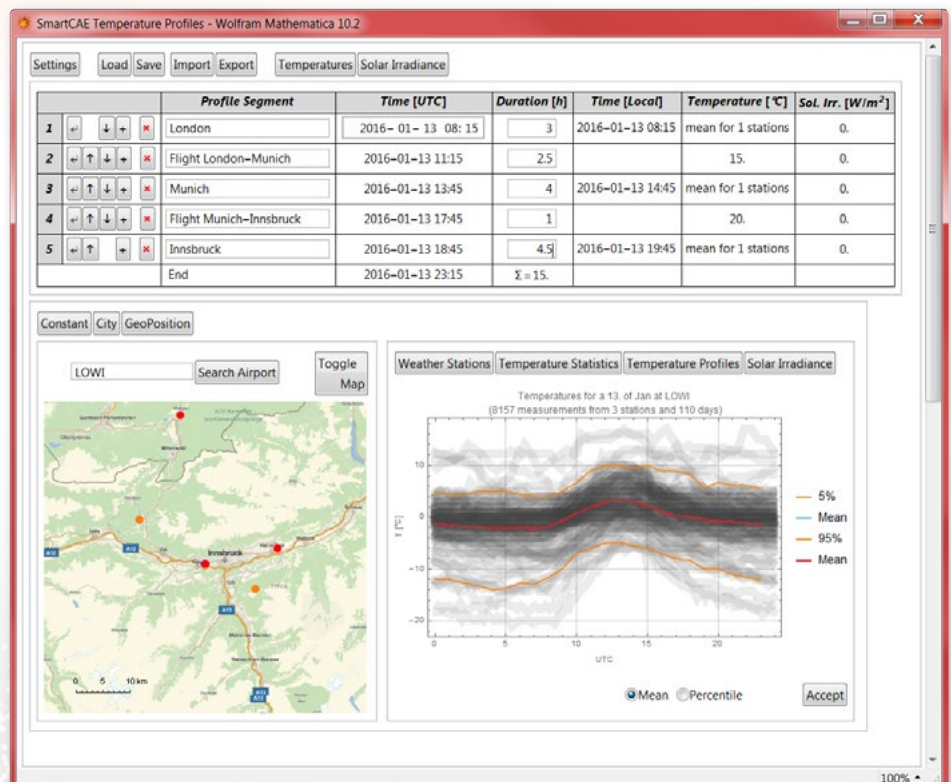
## ● Constructing the lane

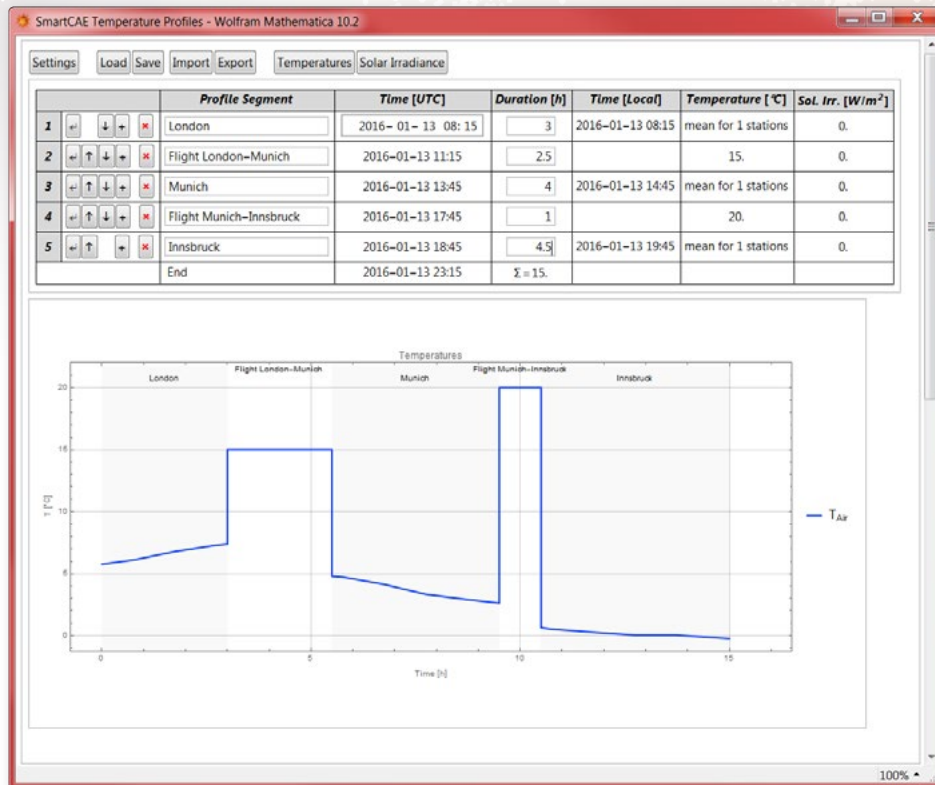
You construct a lane by adding segments. A segment is either a waypoint (e.g., city, airport...), or a transfer (e.g., flight), see top table. As an example, consider the lane from London via Munich to Innsbruck. The map shows the vicinity of the selected waypoint Innsbruck. All available weather stations are indicated by orange markers; weather stations included in your lane construction are indicated by red markers.



## ● Temperature statistics

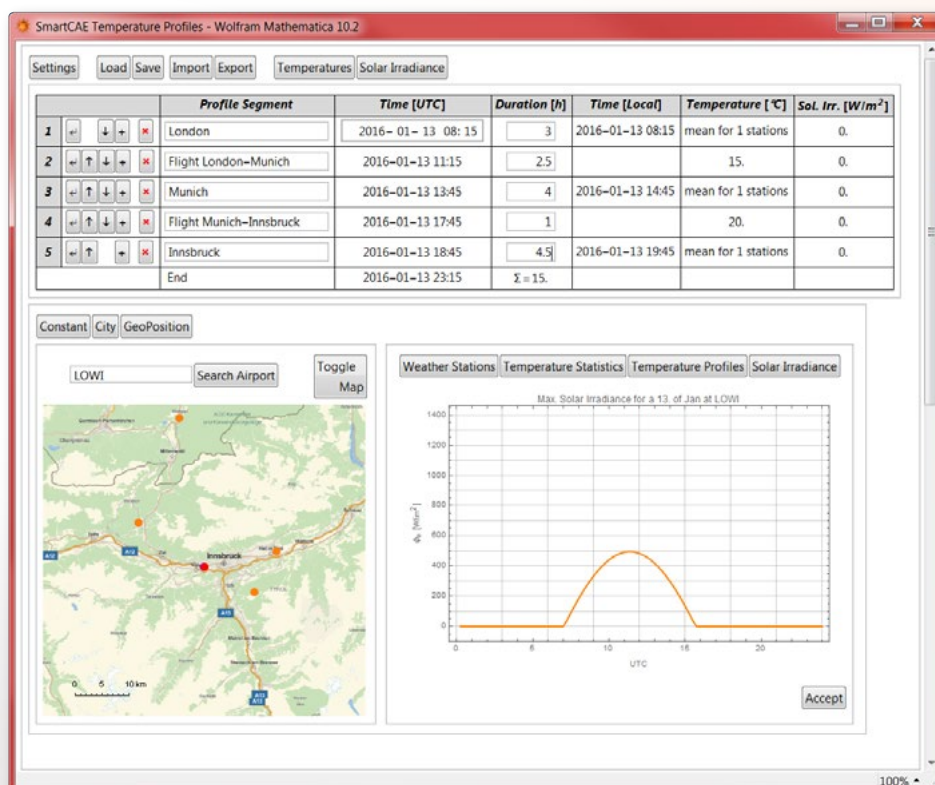
The lower right panel shows an overview of the historical temperature data (black lines) of the three selected weather stations around the selected waypoint Innsbruck (red markers in map) for a specified date. The red line indicates the mean value of the temperature data. The orange lines denote the 5% and the 95% percentile.





- Temperature profile along the lane

You can view the resulting temperature profile of the lane as function of the shipping time in hours. The temperature profile can be exported to common file formats.



- Optionally include solar irradiance

In addition to the historical temperature, you can also include the maximum solar irradiance at each waypoint. The graph in the lower right panel shows the solar irradiance of the selected waypoint at the specified date.



**SmartCAE** Stefan Braun

Am Mitterfeld 3  
D-81829 Munich  
Germany

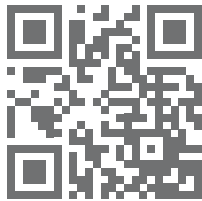
For more Information:

Mr. Stefan Braun

Phone: +49 (0)89 45108878-10

Fax: +49 (0)89 43738061

E-Mail: [stefan.braun@smartcae.de](mailto:stefan.braun@smartcae.de)



[www.smartcae.de](http://www.smartcae.de)